

required by the Plan Commission, including but not limited to the following:

- 1) A plant list and coverage chart showing the location, quantity, size (at time of planting and at maturity), spacing and the scientific and common names of all landscape materials used.
- 1) The location and type of existing trees over four (4) inches in diameter (measured six (6) inches above the ground) within the area to be developed.
- 1) The location and percent of slope of all proposed berms using one (1) foot contours.
- 1) Detailed sections showing elevations of all proposed architectural features, such as walls, lighting or water features.
- 1) Methods used in staking, mulching, wrapping or any other early tree care used.
- 1) The Plan Commission shall impose time schedules for the completion of buildings, parking areas, open space utilization, and landscaping. The Plan Commission may require appropriate sureties to guarantee that improvements will be completed on schedule; as well as the approved protection of the identified wetlands and woodlands on the approved plan.

The information in this brochure is a summary of that found in Section 17.1010 of the Municipal Code. It is not intended to be all inclusive. Other sections of the Code may be applicable to your property.

More information is available from the department listed below.



City of Oak Creek
 Dept. of Community Development
 8640 S. Howell Avenue
 Oak Creek, Wisconsin 53154

Phone: 414-768-6527
 Fax: 414-768-9587

City of Oak Creek



Landscaping Requirements for Nonresidential Developments



Municipal Code
 Section 17.1010

July 2002



The Plan Commission reviews landscaping plans for all new structures and uses and to changes or additions to existing structures and uses in all zoning districts except in the A-1 Limited Agricultural District, the ER, Rs-1, Rs-2, Rs-3, Rs-4, and Rd-1 Residential Districts.

Landscape standards are established to ensure that landscaping becomes an integral part of development in the Commercial and Manufacturing Districts. When buildings or parking lots are extended, these regulations shall apply to the extended portion of the building or parking lot.

Location of landscape areas, plant materials, protection afforded the plantings, including curbing and provision for maintenance shall be subject to approval by the City Plan Commission. The preservation of existing trees, shrubs, and other natural vegetation in the parking area may be included in the calculation of the required minimum landscape area.

Parking Lot Screening. Those parking areas for five (5) or more vehicles if adjoining a residential zoning district line or public right-of-way shall be screened from casual view by an earth berm, a solid wall, fence, evergreen planting of equivalent visual density or other effective means approved by the City Plan Commission. Such fence or berm and landscaping together shall be an average of three (3) feet in height between the parking and the street right-of-way and six (6) feet in height between the parking and any adjacent residential property line. All screening materials shall be placed and maintained at a minimum height of three (3) feet. The Plan Commission may require greater screening requirements for parking of large trucks, semi-trailers and large equipment.

- (1) At least one ornamental deciduous tree, no less than 2.5" caliper, shall be incorporated into the design for every 35 linear feet of public street frontage.
- (2) At least 25% of the total green space area shall be landscaped utilizing plant materials, other than maintained turf, that contribute to ground coverage.

For purposes of determining the number of plants necessary to meet the minimum 25% ground coverage requirement, plant types are categorized by their general size and potential mature at-grade coverage area.

Plant Type	Area of Coverage Provided
Evergreen Tree (>8' Dia.)	75 sq. ft.
Large Shrub (6-8' Dia.)	38 sq. ft.
Medium Shrub (4-6' Dia.)	20 sq. ft.
Small Shrub (2-4' Dia.)	12 sq. ft.
Perennial (4.5" Pot)	6 sq. ft.

Shade and ornamental trees are not considered a plant type contributing to "at grade" coverage.

To assure a diversity of color, texture and year-round interest, the total number of plant materials must be comprised of a minimum 25% evergreens, but no more than 70%.

Did you know?

Landscaping must be installed prior to the issuance of occupancy permits. If seasonal conditions prohibit installation of landscaping the applicant has the option of providing a letter of credit for the entire amount of its installation.

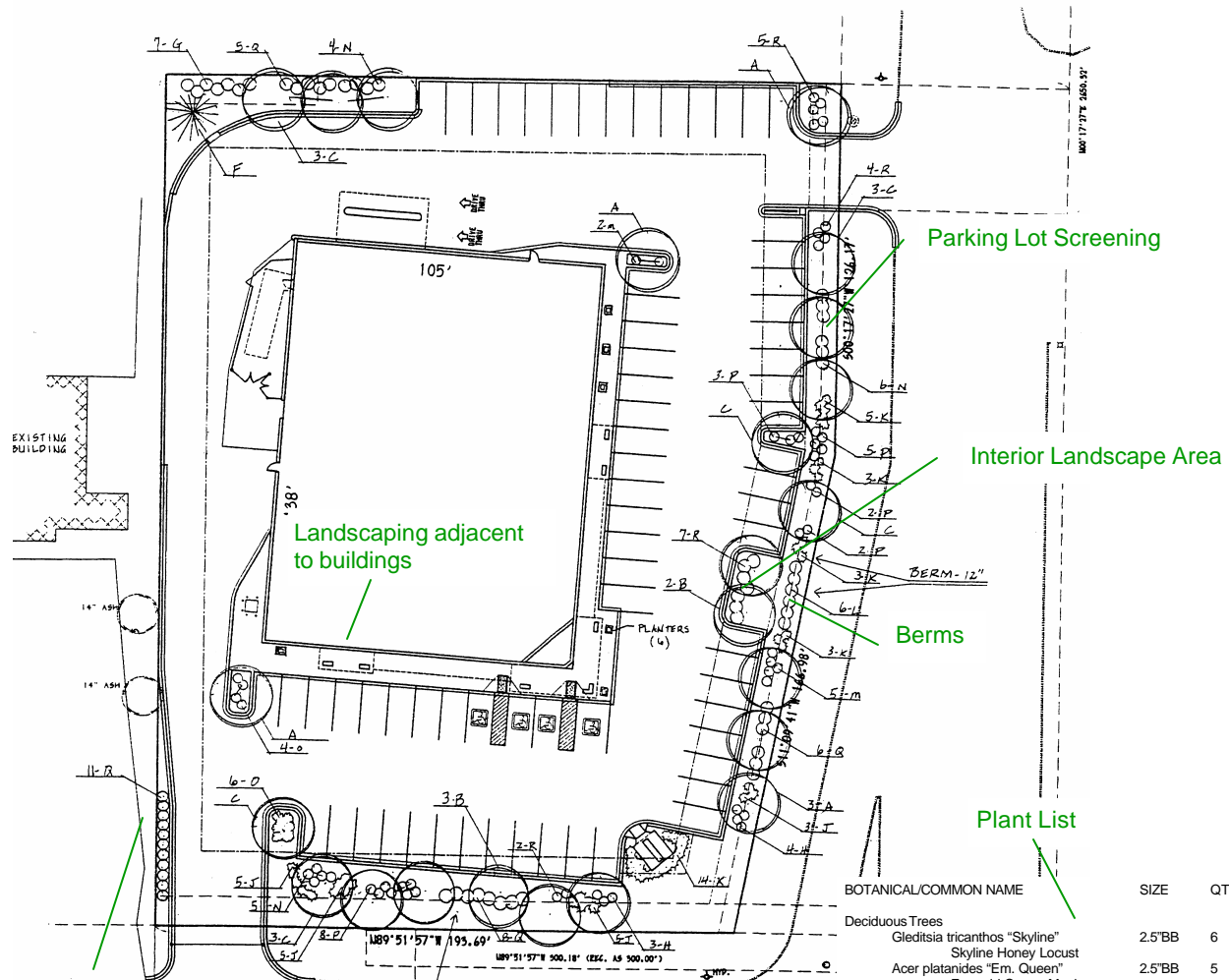
Interior Landscape Area. All public off-street parking lots which serve five (5) vehicles or more and are created or extended subsequent to the adoption of this Ordinance shall be provided with accessory landscaped areas; which may be landscape islands, landscape peninsulas or peripheral plantings totaling not less than five (5) percent of the surfaced area. Landscape islands or peninsulas shall be dispersed throughout the off-street parking area. Landscape islands shall provide a minimum 30-inch clear area for vehicle overhang and snow storage. One shade tree shall be provided within the interior planting area for every 300 square feet of interior landscaping. For parking lots designed for twenty-five (25) parking spaces or more, interior parking lot landscaping shall be provided at the following rates:

Total paved area of lot	% which must be interior planting
0-49,999 sf	5%
50,000 sf +	10%

Perimeter Landscape Area. In an effort to prevent adjacent parking lots from becoming one large expanse of paving, perimeter landscaping shall be required. The perimeter strip shall be a minimum 5 feet in width. A minimum of one tree and five shrubs is required for every 35 linear feet of the perimeter of the parking area and located within the perimeter landscape area.

Landscaping Adjacent to Buildings. There shall be a minimum three-foot landscaped area provided between the edge of pavement and the entrance elevation of the building.

Screening of Trash. Trash receptacles shall not be located within the front or street yard, and shall be screened from casual view by means of screening that is compatible with the main building/structure and



Coverage Chart

Prepared by Landscape Professional

Plant List

BOTANICAL/COMMON NAME	SIZE	QTY
Deciduous Trees		
Gleditsia tricanthos "Skyline"	2.5"BB	6
Skyline Honey Locust		
Acer platanoides "Em. Queen"	2.5"BB	5
Emerald Queen Maple		
Fraxinus pennsylvanica "summit"	2.5"BB	12
Summit Ash		
Evergreen Trees		
Pinus nigra	5"BB	1
Austrian Pine		
Thuja occidentalis "Nigra"	3"BB	7
Nigra Arborvitae		
Evergreen Shrub		
Taxus cuspidata "Dense"	18"BB	7
Dense Yew		
Juniperus sabina "Old Gold"	18"P	18
Juniper Old Gold		
Juniperus chinensis "Kallay"	18"P	28
Juniper Kallay		
Shrubs		
Euonymus alatus compact	3"BB	6
Compact Burning Bush		
Spiraea burnaيدا "Anthony Waterer"	18"P	7
Anthony Waterer Spiraea		
Syringa meyer "Dwarf Korean"	24"P	15
Dw. Korean Lilac		
Rhus aromatica "Gro Lo"	15"P	10
Gro-Lo Sumac		
Diervilla lonicera	15"P	20
Dwarf Bush Honeysuckle		
Contoneaster acutifolia	3"P	30
Peking Cotoneaster		
Spiraea burnaيدا "Goldflame"	18"P	18

Shade Tree Planting

landscaping.

Screening of Ground Mounted Mechanical Equipment. Ground mounted mechanical equipment shall not be located within the front or street yard, and shall be screened from casual view by means of screening that is compatible with the main building/structure and landscaping.

Screening of Roof Mounted Mechanical Equipment - Roof mounted mechanical equipment shall be screened from casual view.

Retaining Walls. No retaining wall shall exceed four (4) feet in height unless it has been designed and its construction supervised by a Professional Engineer. A retaining wall may be stepped to achieve greater height. Each step of the wall shall be no more than four (4) feet in height and shall be set back a minimum of three (3) feet from the previous step. Acceptable materials for retaining walls are: segmental masonry type, timber, railroad ties, or concrete. If the retaining wall is constructed of concrete, landscaping must accompany the design of the retaining wall.

Berms Side slopes of berms shall not exceed a gradient of 1-ft. vertical to 3ft. horizontal unless approved by the City Engineer.

Buffer Yards. Appropriate buffers shall be provided between dissimilar uses as set forth in Section 17.0205 (d) of this Ordinance.

Submission Requirements. A Landscape Plan (to scale) must be submitted which includes details of all proposed landscaping, buffering and screening, including the estimated cost of the landscaping. These plans shall be prepared by a landscape professional and show the location and dimensions of all existing and proposed structures, parking, drives, right-of-ways and any other permanent features, and all other information